

Yatte Yattah - case study

About the project

This project is located on the Yatte Yattah flats and provides a connection between Pointer Hill / Yatte Yattah Reserve and Narrawallee Creek. The farm is 64 hectares in size and includes 1.3km of Narrawallee and Currowar Creek, tributaries of the regionally significant Narrawallee Estuary.

The landholder was concerned about the lack of vegetation on his farm for livestock shade and potential land slippage on the steep grazing hill. A small land slip has occurred on the neighbouring farm in 2016 near the project site.

Figure 1: Planting on the top of the hill (2.8ha) looking towards Pigeon House Mountain.



Project Site 1 – Hill Paddock

This project includes the revegetation of a cleared grazed hillside (2.8ha) with various species (South Coast Grassy Woodland / Southern Turpentine Forest) which will allow grazing (long term) in an open woodland environment (7-10yrs). A small gully connected to Narrawallee Creek has been revegetated with riparian and rainforest species and will be protected from grazing pressure.

Project Site 2 – Narrawallee Creek

The landholder has previously fenced off 1.3km of Narrawallee Creek from livestock on his farm, occasionally allowing crash grazing to control grass and weeds along the riparian corridor. This project will revegetate 390m of Narrawallee Creek, slowly

replacing a monoculture of Black Wattles (*Acacia mearnsii*) which are dying and regenerating along the corridor.

Figure 2: Planting along Narrawallee Creek, re-establishing and replacing Black Wattle with a diverse riparian corridor.



Project results

The landholder is very excited about the long term benefits of this project and the re-establishment of biodiversity on his farm. The project has established:

- * Hillside – 1,850 tubestock
- * Narrawallee Creek – 210 tubestock
- * Roadside Corridor – 129 tubestock

The remaining 910m of Narrawallee Creek will be revegetated over time, creating a significant riparian corridor in the Narrawallee catchment.

Partners: NSW Environmental Trust

More information

For further information about the Milton Rocks project please contact:

Andrew Britton, Land Services Officer

South East Local Land Services

13 Schofields Lane [PO Box 63] BERRY NSW 2535

t: 02 4464 6020 | m: 04080 50748

e: andrew.britton@lls.nsw.gov.au

w: www.miltonrocks.weebly.com



Local Land
Services
South East

Yatte Yattah Project Map



Disclaimer: Data has been extracted from digitized field information. The State of NSW and South East Local Land Services and its employees, officers, agents or servants accept no responsibility for the result of any actions taken or the decisions made on the basis of the information, or for any errors, omissions or inaccuracies contained in this map.
Sources: Map created by South East LLS. Base topographic data supplied by the © NSW Department of Finances and Services. Reference data ©NSW Office of Environment and Heritage.
Projection: Geographical Coordinate System
Datum: Geocentric Datum of Australia 1994
Copyright NSW Government. All Rights Reserved. No part of this map may be reproduced without written permission.

Legend

- Existing Fencing
- Fence
- Establish Vegetation
- Property Boundary

1

Photo Points

Prepared By: Andrew Britton
Date Prepared: June 2018
Contact Number: (02) 4464 6020



0 0.0425 0.085 0.17 0.255 0.34 km

Photo Point References – Hill (Photo Point 1)



Hill – looking south (May 2017)



Hill – looking south (June 2018)

Photo Point References – Hill (Photo Point 2)

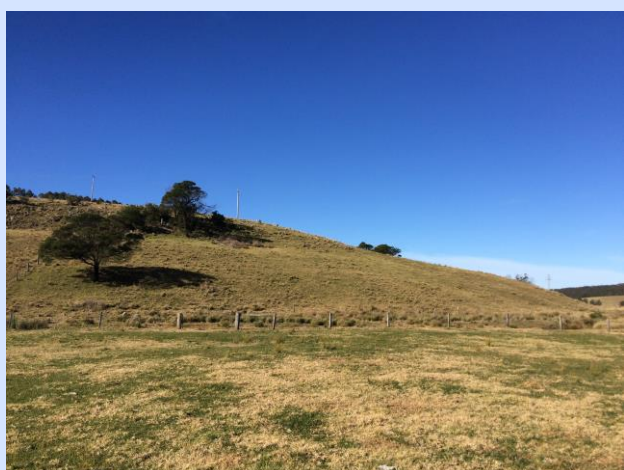


Hill – looking west (April 2017)



Hill – looking east (June 2018)

Photo Point References – Currowar Creek (Photo Point 3)



Currowar Creek – looking east (April 2018)



Currowar Creek – looking east (June 2018)

Photo Point References – Narrawallee Creek (Photo Point 4)



Narrawallee Creek– looking south (June 2017)



Narrawallee Creek– looking south (June 2018)

Photo Point References – Narrawallee Creek (Photo Point 5)



Narrawallee Creek – looking east (March 2018)



Narrawallee Creek – looking east (June 2018)

Photo Point References – Highway Corridor (Photo Point 6)



Highway Corridor – looking north (May 2017)



Highway Corridor – looking north (June 2018)

