

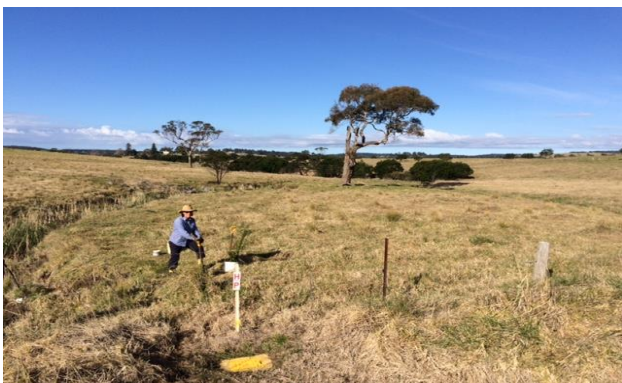
Leaneys Creek - case study

About the project

This project is located on Leaneys Creek (south of Croobyar Road) and connects to extensive riparian plantings on Croobyar Dairy Farm (2012-17). The farm is 60 hectares and includes 1.24km of Leaneys Creek and 550m of Stony Creek. Both creeks join on farm and flow into the regionally significant Burrill Lake / Estuary downstream.

The landholders are new to the Milton area and have purchased a farm with no internal fencing resulting in limited grazing management (thick kikuyu mat). As part of their long term sustainable farm management plan, improved grazing and an extensive riparian corridor will be established across the property over the next 5-10 years.

Figure 1: Leaneys Creek, the first hole dig (Spring 2016) by Project Officer Julie Holstegge.



Project Site – Leaneys Creek (Stage 1)

This project started in Spring 2016 and aims to revegetated a predominately cleared riparian corridor (2.4ha) with a diverse mix of South Coast River Flat Forest and Grassy Woodland species. A single Forest Red Gum (*Eucalyptus tereticornis*) and Blue Box (*Euc. baueriana*) is the only overstorey present. Black Wattle, Small Leaf Privet and a small patch of Swamp Paperbark (*Melaleuca ericifolia*) is present along the southern half of the project corridor.

Flooding, vehicle access (wet swampy paddocks) and maintaining grass growth are ongoing maintenance

issues along the 398m riparian corridor.

Figure 2: Leaneys Creek (March 2017) – 1,473 tubestock planted with many more to go.



Project results

The establishment of native tubestock across the site has been a challenge with dry summers and flooding events causing some damage. So far the project has established: 1,690 tubestock

The landholders will continue to establish tubestock along the riparian corridor beyond June 2018, as there is still areas to be revegetated. Species which require some canopy / protection from overstorey species may be planted in 2019 based on current growth rates.

Partners: NSW Environmental Trust

More information

For further information about the Milton Rocks project please contact:

Andrew Britton, Land Services Officer

South East Local Land Services

13 Schofields Lane [PO Box 63] BERRY NSW 2535

t: 02 4464 6020 | m: 04080 50748

e: andrew.britton@lls.nsw.gov.au

w: www.miltonrocks.weebly.com



Leaneys Creek Project Map



Disclaimer: Data has been extracted from digitized field information. The State of NSW and South East Local Land Services and its employees, officers, agents or servants accepts no responsibility for the result of any actions taken or the decisions made on the basis of the information, or for any errors, omissions or inaccuracies contained in this map.
Source: Map created by South East LLS. Base topographic data supplied by the © NSW Department of Finances and Services. Reference data ©NSW Office of Environment and Heritage.
Projection: Geographical Coordinate System
Datum: Geocentric Datum of Australia 1994
Copyright NSW Government. All Rights Reserved. No part of this map may be reproduced without written permission.

Legend

-  Establish Vegetation
-  Fence
-  Drainage_25K
-  Property Boundary

 Photo Points

Prepared By :Andrew Britton
Date Prepared: June 2017
Contact Number: (02) 4464 6020

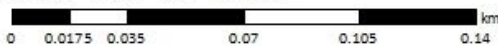


Photo Point References – Leaneys Creek (Photo Point 1)



Leaneys Creek – looking south (September 2016)



Leaneys Creek – looking south (June 2018)

Photo Point References – Leaneys Creek (Photo Point 2)



Leaneys Creek – looking south (April 2017)



Leaneys Creek – looking south (April 2017)

Photo Point References – Leaneys Creek (Photo Point 3)



Leaneys Creek – looking south (June 2018)

Photo Point References – Leaneys Creek (Photo Point 4)



Leaneys Creek – looking north (May 2018)

